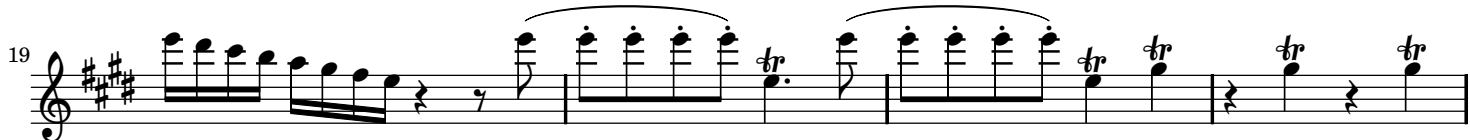


Spring
from *The Four Seasons*

Antonio Vivaldi (1678–1741)

Op. 8, No. 1, RV 269

Allegro (♩ = 108)



Musical score for flute in G major (one sharp), measures 43-78. The score is written in treble clef and 2/4 time. It features various musical techniques including triplets, trills, and slurs. The key signature is G major (one sharp). The piece concludes with a double bar line and a 3/4 time signature.

43 *tr*

47

49

51

53

55

58 *tr*

63 *tr*

67

71

74 *tr*

78 *p* *tr*

Largo (♩ = 54)

83

91

99

107

114

12

8

Allegro (♩ = 108)

122

125

p *f*

128

131

134

136

138

